

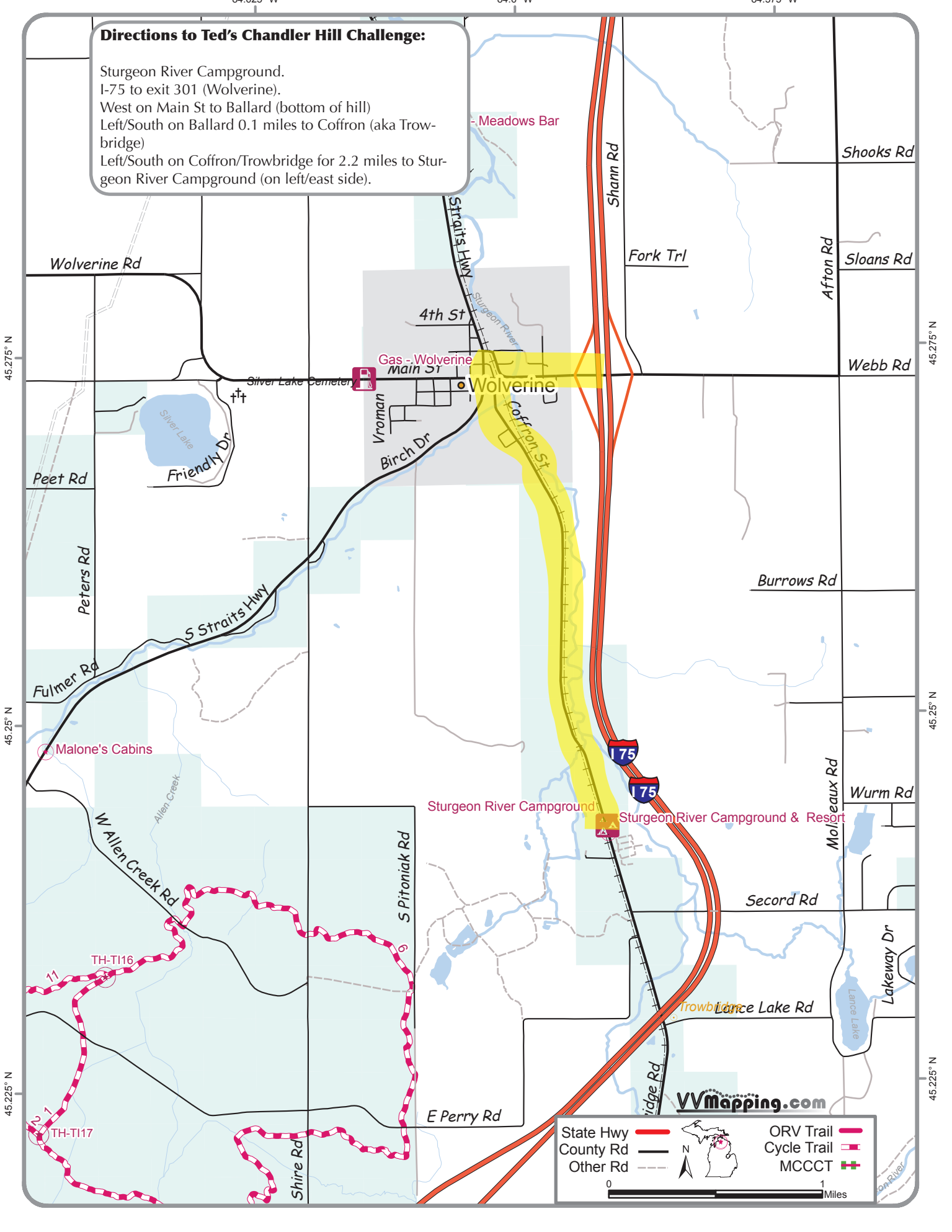
84.625° W

84.6° W

84.575° W

### Directions to Ted's Chandler Hill Challenge:

Sturgeon River Campground.  
 I-75 to exit 301 (Wolverine).  
 West on Main St to Ballard (bottom of hill)  
 Left/South on Ballard 0.1 miles to Coffron (aka Trowbridge)  
 Left/South on Coffron/Trowbridge for 2.2 miles to Sturgeon River Campground (on left/east side).



45.275° N

45.25° N

45.225° N

45.275° N

45.25° N

45.225° N

VVmapping.com

State Hwy		 0 1 Miles
County Rd		
Other Rd		
		ORV Trail Cycle Trail MCCCT