

89°54'0"W

89°48'0"W

89°42'0"W

89°36'0"W

89°30'0"W

89°24'0"W

FS OHV Road

State Hwy

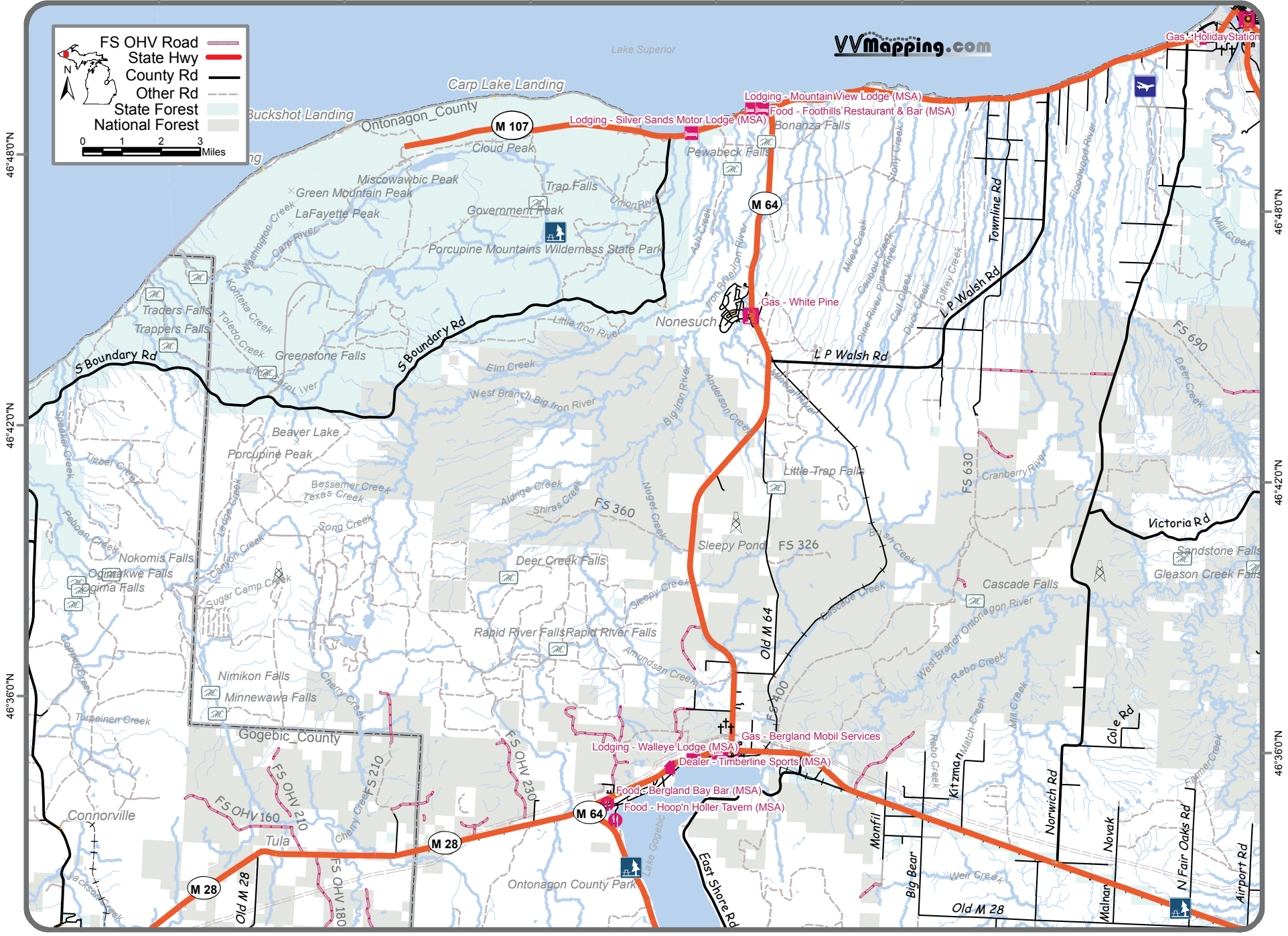
County Rd

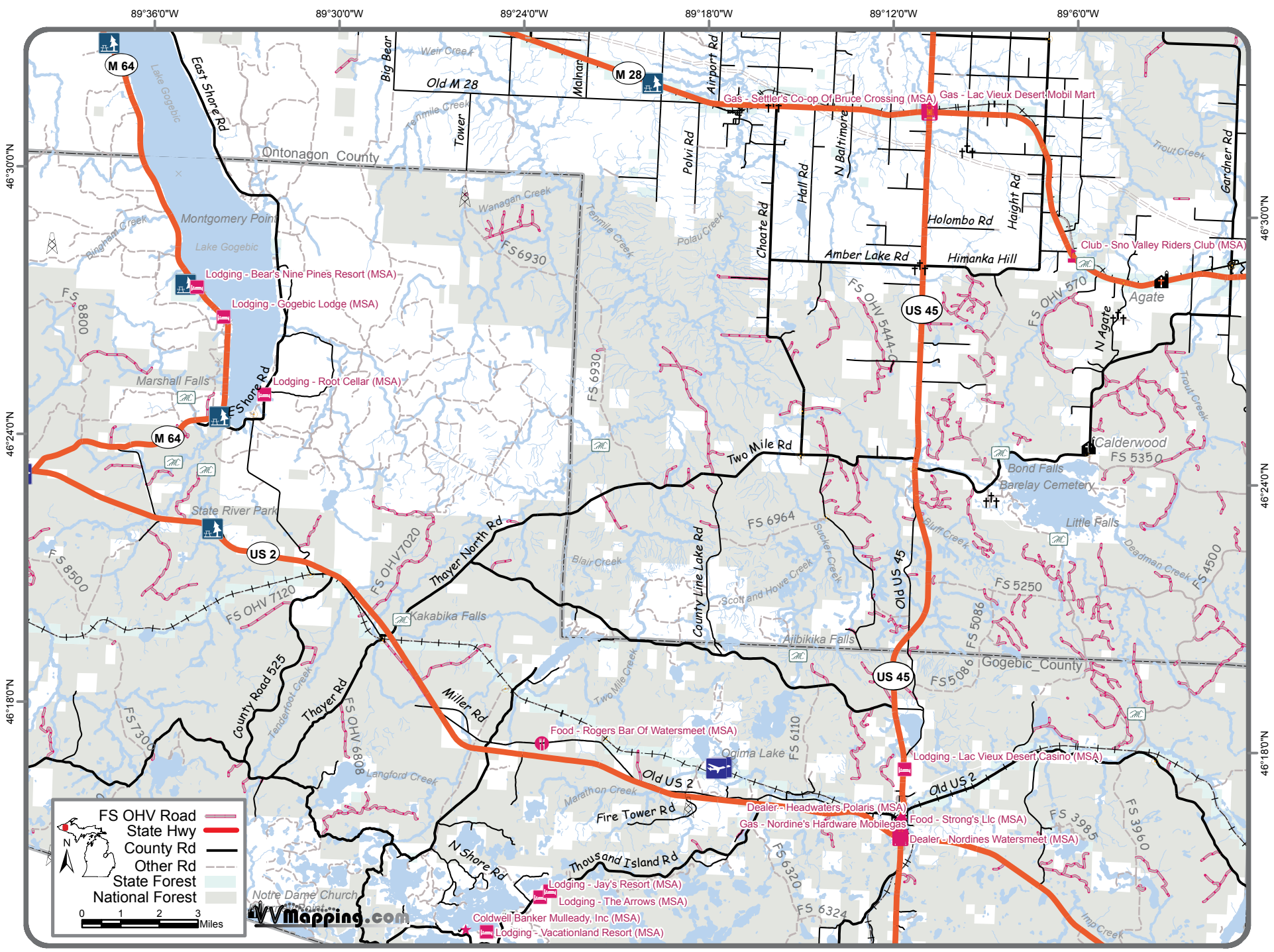
Other Rd

State Forest

National Forest

VVMapping.com





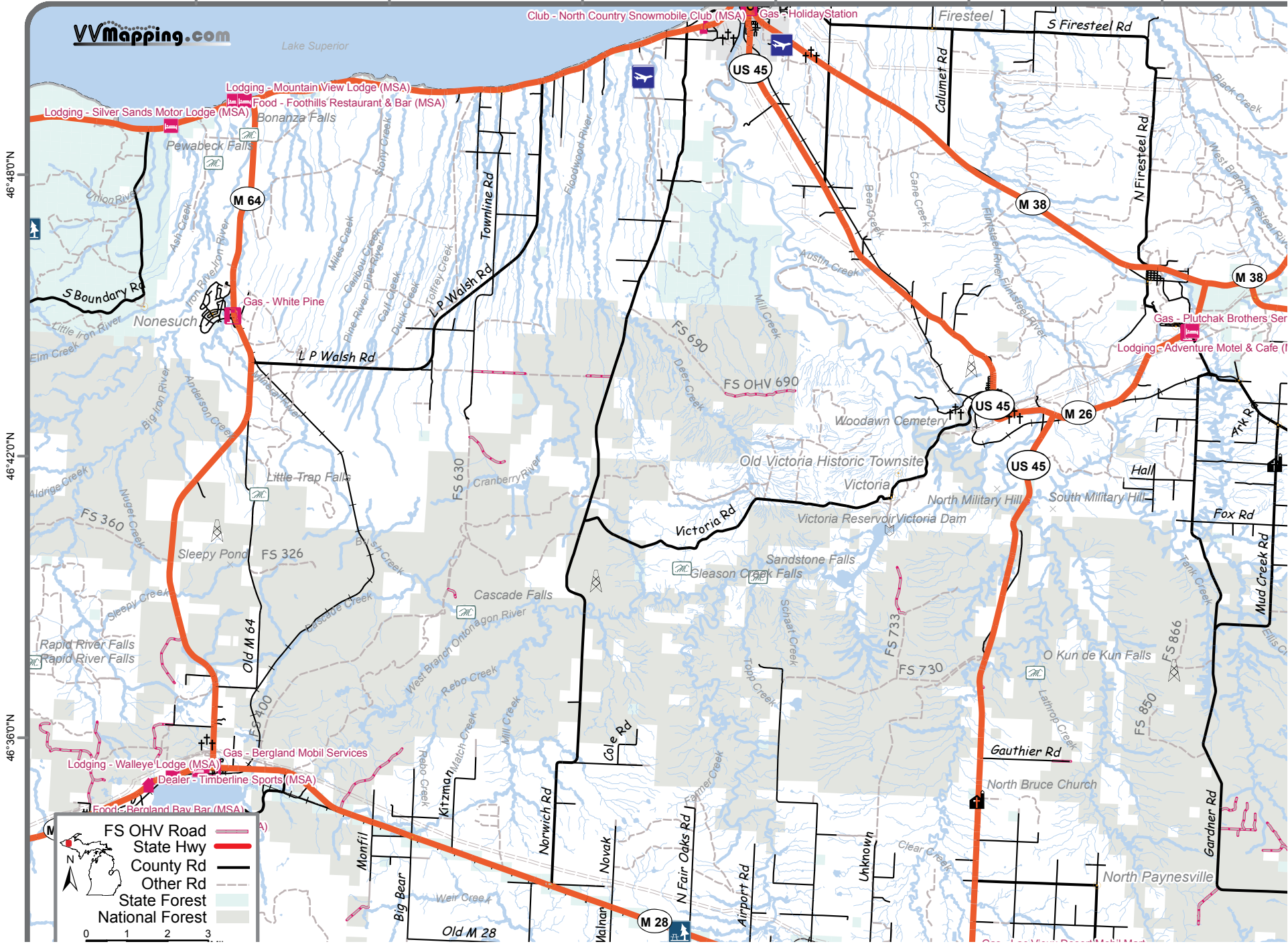
mapping.com

0 1 2 3 Miles

- Lodging - Bear's Nine Pines Resort (MSA)
- Lodging - Gogebic Lodge (MSA)
- Lodging - Root Cellar (MSA)
- Food - Rogers Bar Of Watersmeet (MSA)
- Lodging - Jay's Resort (MSA)
- Lodging - The Arrows (MSA)
- Coldwell Banker Mulleady, Inc (MSA)
- Lodging - Vacationland Resort (MSA)
- Gas - Settler's Co-op Of Bruce Crossing (MSA)
- Gas - Lac Vieux Desert/Mobil Mart
- Club - Sno Valley Riders Club (MSA)
- Gas - Nordine's Hardware Moblegas
- Food - Strong's, Llc (MSA)
- Dealer - Nordines Watersmeet (MSA)
- Dealer - Headwaters Polaris (MSA)
- Lodging - Lac Vieux Desert Casino (MSA)

89°36'0"W 89°30'0"W 89°24'0"W 89°18'0"W 89°12'0"W 89°6'0"W

VVmapping.com



46°48'0"N
46°42'0"N
46°36'0"N

FS OHV Road (pink dashed line)

State Hwy (red solid line)

County Rd (black solid line)

Other Rd (black dashed line)

State Forest (green hatched area)

National Forest (grey hatched area)

0 1 2 3