

84.775° W

84.75° W

84.725° W

84.7° W

44.775° N

44.775° N

44.75° N

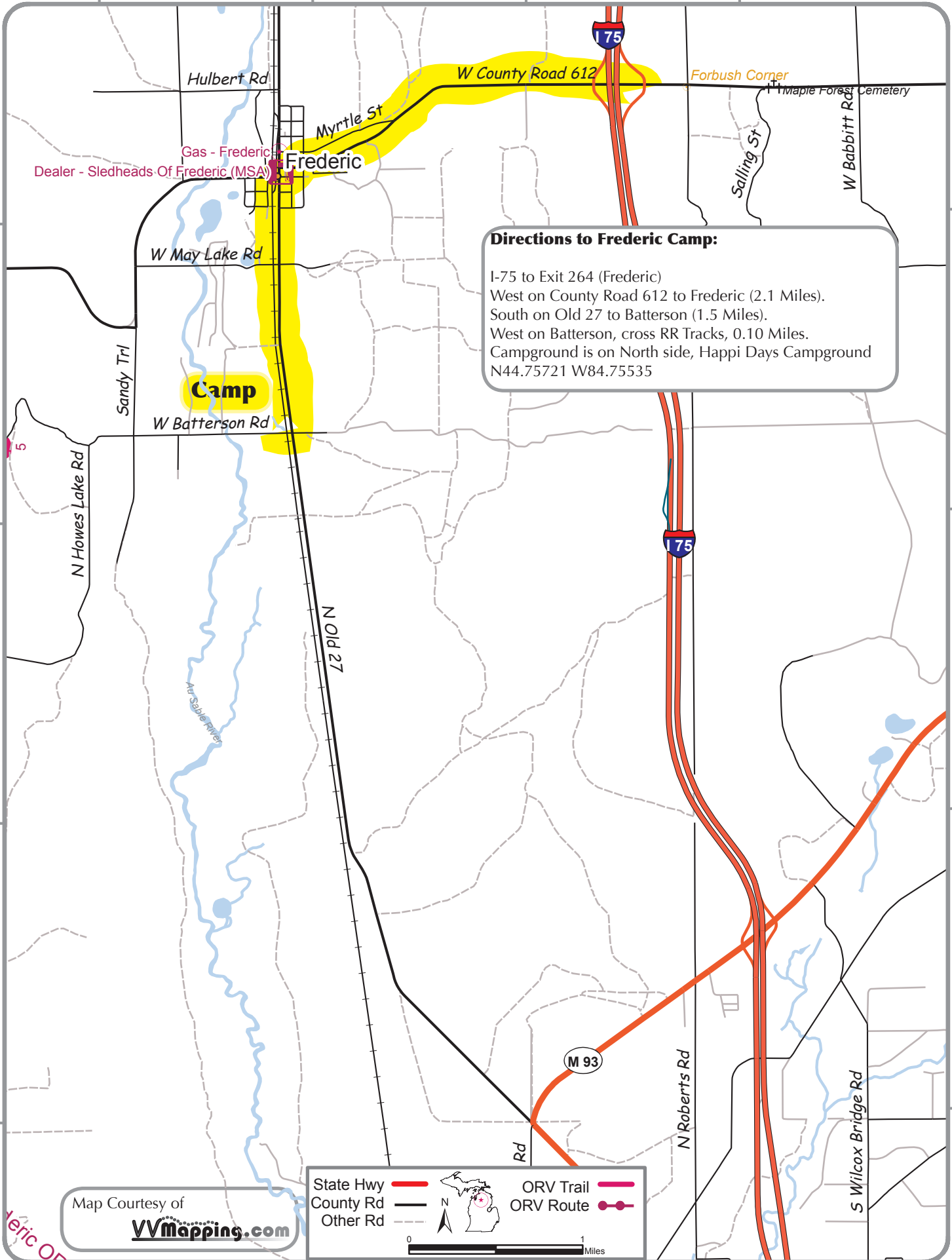
44.75° N

44.725° N

44.725° N

44.7° N

44.7° N



**Directions to Frederic Camp:**

I-75 to Exit 264 (Frederic)  
 West on County Road 612 to Frederic (2.1 Miles).  
 South on Old 27 to Batterson (1.5 Miles).  
 West on Batterson, cross RR Tracks, 0.10 Miles.  
 Campground is on North side, Happi Days Campground  
 N44.75721 W84.75535

Map Courtesy of  
**VVMAPPING.COM**

State Hwy		ORV Trail	
County Rd		ORV Route	
Other Rd			

0 1 Miles