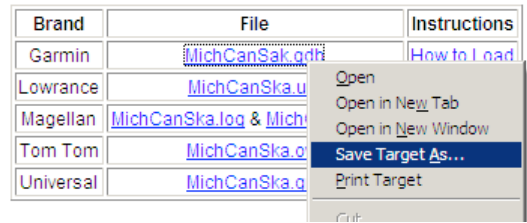
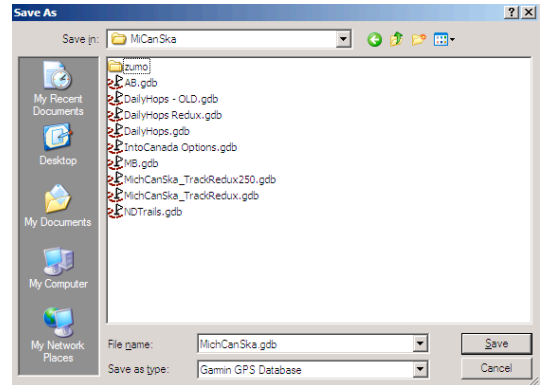


How to load GPS Tracks & Waypoints to Garmin GPS with Windows

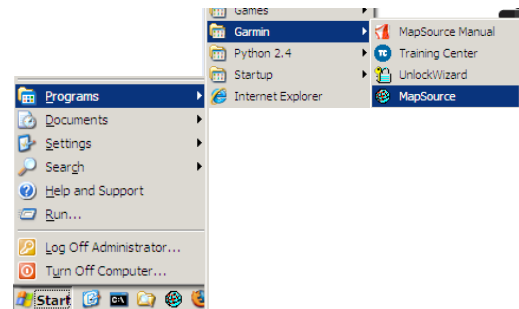
From the web site, right click while clicking on the link. A menu will appear allowing you to “Save Target As”.



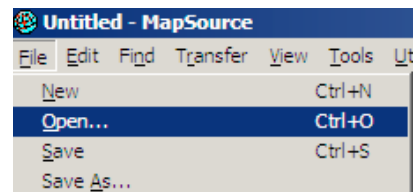
Save the file to a folder, taking note of where you are saving it.



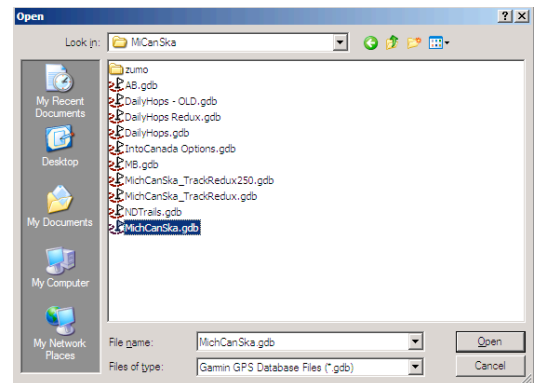
Open Garmin's MapSource program



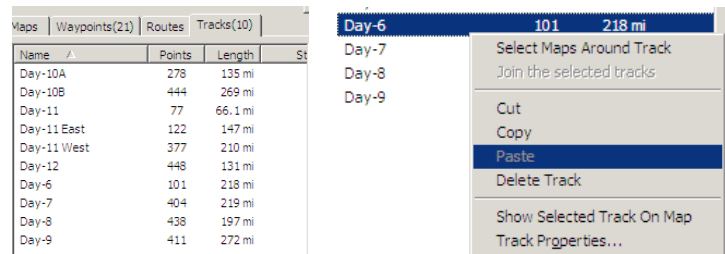
Choose Open from the File menu



Navigate to the folder where the file was saved to, highlight the file by clicking once on it and then click the Open button.



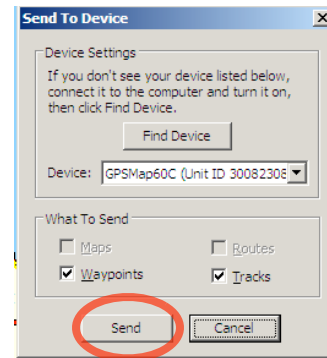
The file should open and the tracks & waypoints should appear in the left hand panels of the program; they should also appear on the map as well. You can zoom to one of the items by right clicking on the item and choose “Show Selected on Map”.



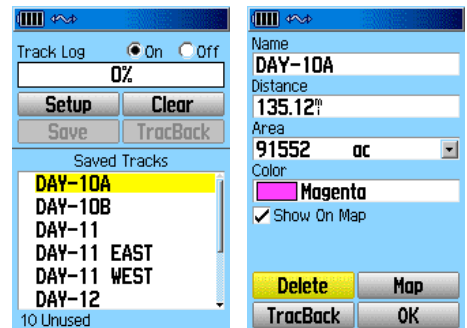
To send the files to your GPS, connect the GPS to the computer, then click the Send to Device button or menu item (under Transfer).



In the resulting window, make sure the boxes for Waypoints and Tracks are checked; we don't want to send maps at this time. If your GPS is displayed in the “Device” pop up menu, we can click the Send button; if not, click the Device menu and choose the GPS from the list; if it's not there, the computer is not recognizing the GPS and further troubleshooting will be needed (usually just disconnect and reconnect the cabling).



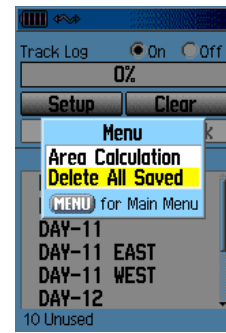
On the GPS, you can confirm the items are loaded by viewing the Tracks menu item (varies by model, usually off of the main menu). Each track will be listed. Sometimes, the track must be “enabled” by checking the box “show on map” on an individual track. Highlight the track, then press enter. On the track detail page, the color of the track can be changed, show or hide on map and other options can be dealt with.



Zumo units handle the track differently. Once loaded to the GPS, when the GPS is rebooted, it will indicate new data is available and allow you to Import it. Unlike the outdoor models (60C, eTrex, others) the tracks will NOT show on the map automatically. The track must be “navigated”, touch the Where To -> Routes and then choose the track to navigate. NOTE: MichCanSka data is broken into two parts for each day; once the first segment completes, the process for Where To -> Routes, -> Go must be repeated but for the second segment (ie first “Day 6” and then “Day 6b”).



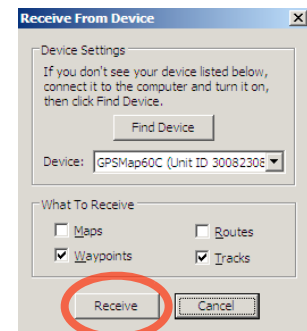
To ensure you have only the latest tracks in the GPS, it's best to delete the existing ones prior to loading the new ones. You can highlight each track in the GPS, click Enter, then choose Delete; alternatively you can press Menu and then choose "Delete all Saved" to delete them all at once. On a Zumo, you can delete each Route via the Where To -> Routes; highlight the route, then Edit, then choose Delete.



To get data into MapSource from the GPS, open the MapSource program, connect the GPS to the computer and then click the Receive from Device button or menu (under Transfer).



Check the boxes for Waypoints and Tracks, then click the Receive button.



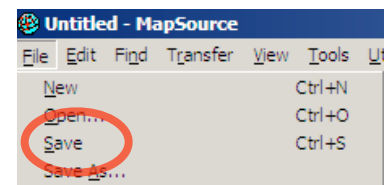
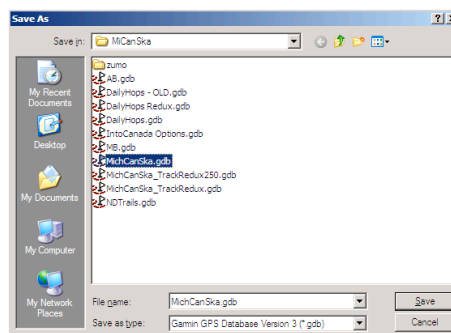
The items will be listed on the left side under the associated tracks and waypoints tabs.

Name	Points	Length	St
Day-10A	278	135 mi	
Day-10B	444	269 mi	
Day-11	77	66.1 mi	
Day-11 East	122	147 mi	
Day-11 West	377	210 mi	
Day-12	448	131 mi	
Day-6	101	218 mi	
Day-7	404	219 mi	
Day-8	438	197 mi	
Day-9	411	272 mi	

Check the boxes for Waypoints and Tracks, then click the Receive button.

The items will be listed on the left side under the associated tracks and waypoints tabs.

Choose Save from the File menu, then pick a folder to save the file to and click the Save button after giving the file a name.



Using GMail, as an example, I'll create a new message, put in the "To" address. Click the "Attach a File" link and choose the saved file from above. I can see the attachment has been attached to the message and can now send it.

